

# LEASE

# McGEEES

PROPERTY

T1, 11 SOLOMON STREET, ADELAIDE



## EDGY INDUSTRIAL

RESTAURANT  
BAR | CAFE  
*or* RETAIL

## LEASE OPPORTUNITIES

[POWERPLANTADELAIDE.COM](http://POWERPLANTADELAIDE.COM)

### Laneway Gem

- Rare corner cafe/restaurant opportunity in edgy industrial building
- Total area of 200 square metres\* with three street access
- Servicing the growing laneway precinct and adjacent TAFE and Endeavour College
- Base services available
- One of the last laneway opportunities available
- Inspection strictly by appointment with consultant only

#### FOR FURTHER DETAILS CONTACT:

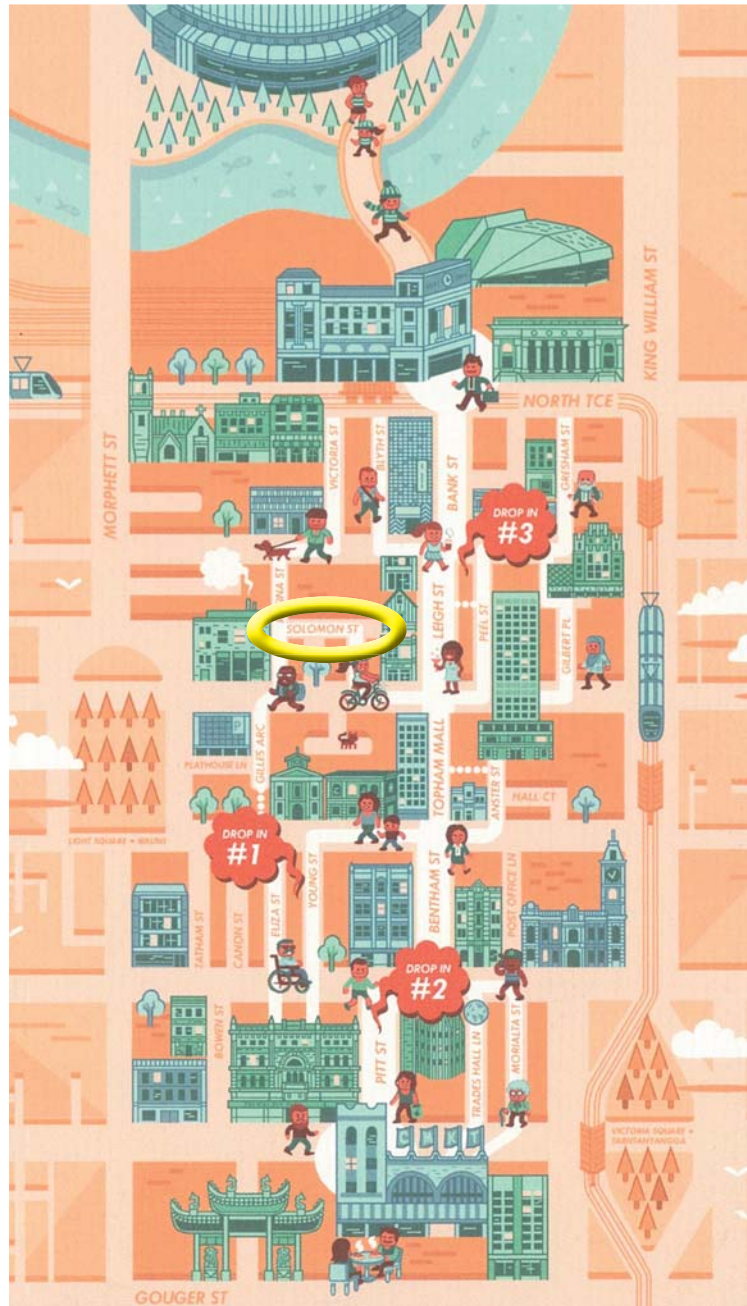
TIM POZZA  
0411 418 161  
tpozza@adl.mcgees.com.au

Contact Agent for Rental Details

60 Waymouth Street, Adelaide  
[www.mcgees.com.au](http://www.mcgees.com.au) RLA 1722

\*approx

08 8414 7800

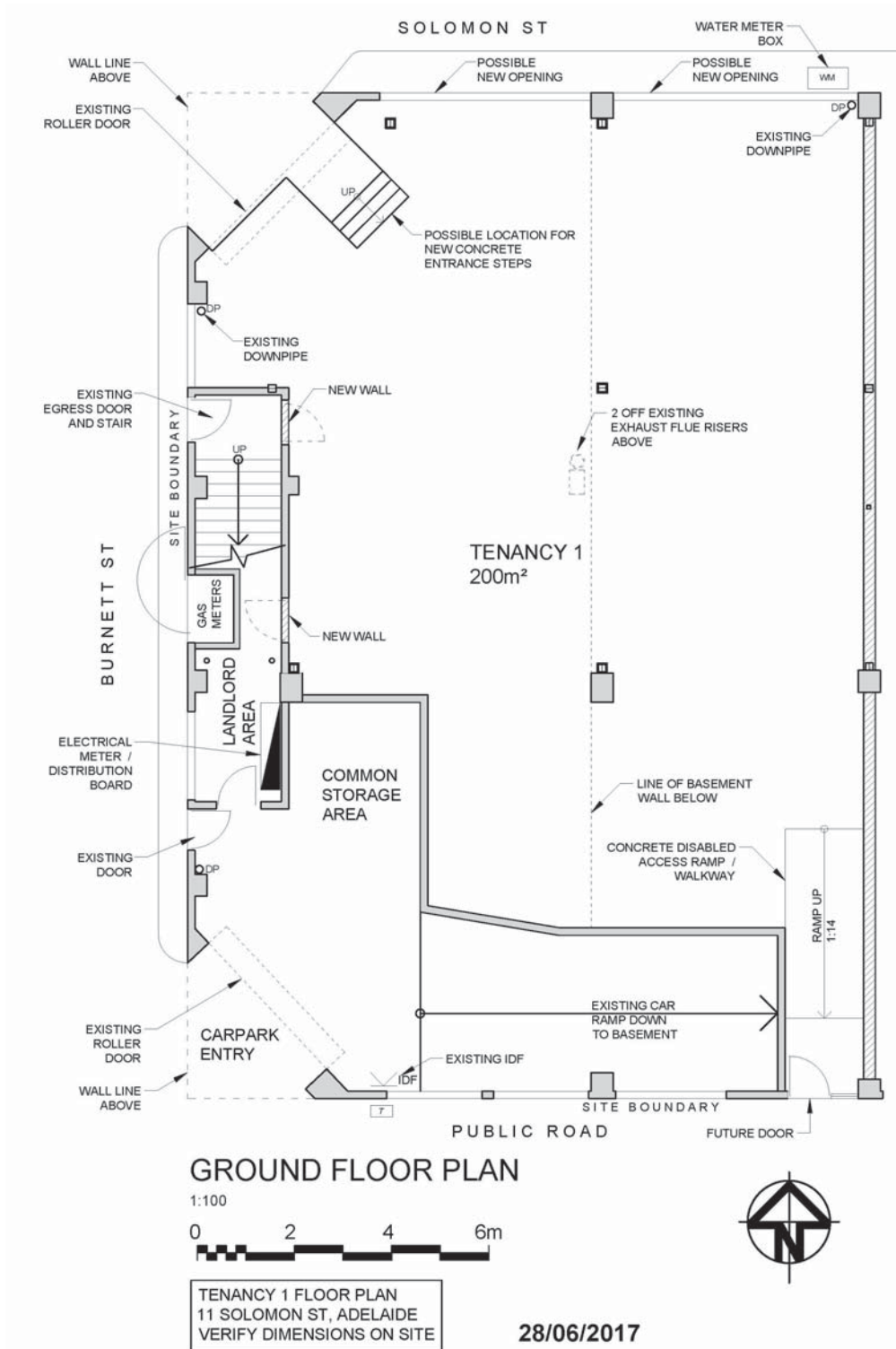


Adelaide City Council Laneways Map

FOR FURTHER DETAILS CONTACT:

TIM POZZA  
0411 418 161  
tpozza@adl.mcgees.com.au





FOR FURTHER DETAILS CONTACT:

**TIM POZZA**  
0411 418 161  
tpozza@adl.mcgees.com.au

Information herein has been supplied from sources which we deem reliable. However we do not guarantee the information contained herein and accordingly all interested parties should make their own enquiries to verify the information.